

INFINITY

TUB & SHOWER FAUCET

Taymor



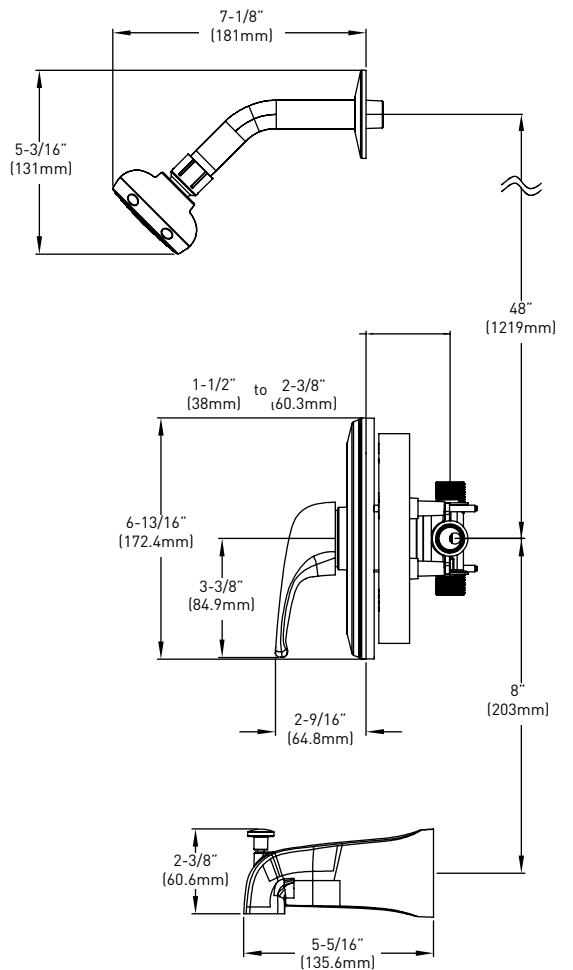
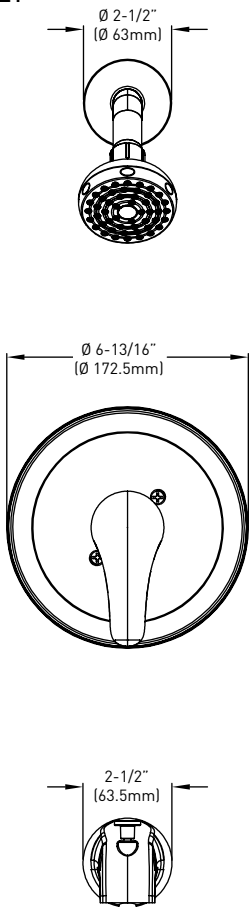
FEATURES

- PRESSURE BALANCED SINGLE LEVER HANDLE AND SINGLE SETTING SHOWER HEAD WITH ANTI-CLOG RUBBER TIPS
- AVAILABLE IN POLISHED CHROME
- CERAMIC CARTRIDGE
- SHOWER HEAD MAXIMUM FLOW RATE: 2.0 GPM/ 7.6 LPM @ 80 PSI
- TUB SPOUT MINIMUM FLOW RATE: 2.4 GPM/9.0 LPM @ 20 PSI
- SLIP-FIT SPOUT
- FACTORY PRESSURE TESTED
- cUPC CERTIFIED / WaterSense® CERTIFIED



INFINITY

TUB & SHOWER FAUCET



CRITICAL DIMENSIONS NOT TO SCALE

CONSTRUCTION

- METAL CONSTRUCTION WITH POLISHED CHROME FINISH
- BRASS VALVE BODY

VALVE

- DUAL 1/2" I.P. OR 1/2" COPPER SWEAT CONNECTIONS
- ADJUSTABLE TEMPERATURE LIMIT STOP TO CONTROL MAXIMUM HOT WATER TEMPERATURE
- PRESSURE BALANCING MECHANISM MAINTAINS SELECTED DISCHARGE TEMPERATURE TO $\pm 2^\circ$
- BACK-TO-BACK INSTALLATION CAPABILITY

OPERATION

- LEVER STYLE HANDLE WITH TEMPERATURE INDICATOR ON THE ESCUTCHEON

WATER-CONTROL MECHANISM

- CARTRIDGE
- ONE-PIECE, SELF CONTAINED CERAMIC DISC VALVE

FLOW

- SHOWERHEAD IS LIMITED TO 2.0 GPM (7.6 L/MIN.)

CODES/STANDARDS APPLICABLE

- cUPC CERTIFIED
- ASME A112.18.1
- ASSE 1016

GUARANTEE

- LIMITED LIFETIME GUARANTEE AGAINST DEFECTS IN MATERIAL AND WORKMANSHIP TO ORIGINAL CONSUMER PURCHASER
- 5 YEAR WARRANTY IF USED IN INDUSTRIAL, COMMERCIAL AND BUSINESS INSTALLATIONS



MEETS ADA
STANDARDS

DESCRIPTION	POLISHED CHROME	MATTE BLACK	CASE QTY.
PRESSURE BALANCED SINGLE LEVER HANDLE TUB & SHOWER FAUCET AND SINGLE SETTING SHOWER HEAD WITH ANTI-CLOG TIPS	06-9966AS	06-9966ASBLK	4