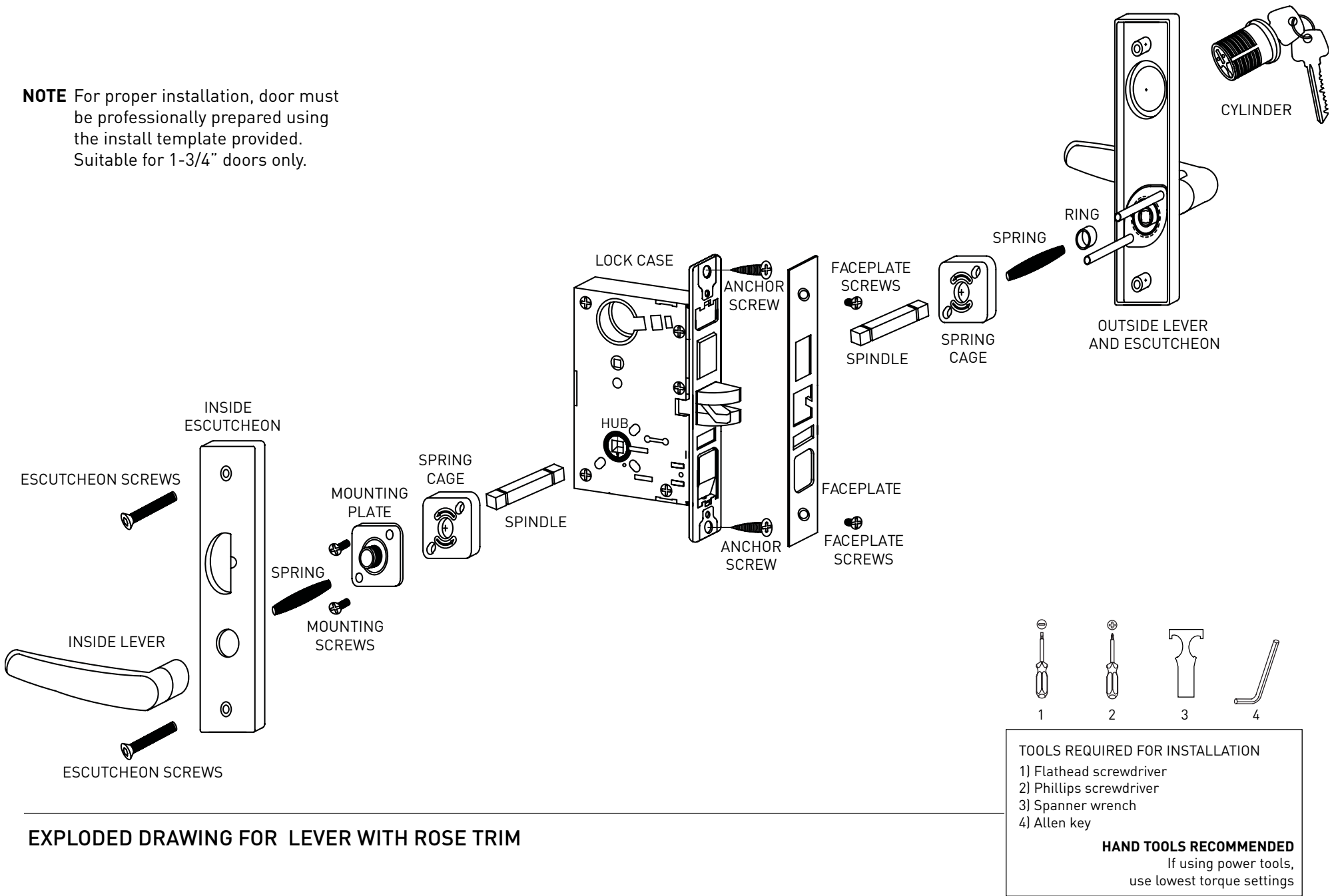


Taymor

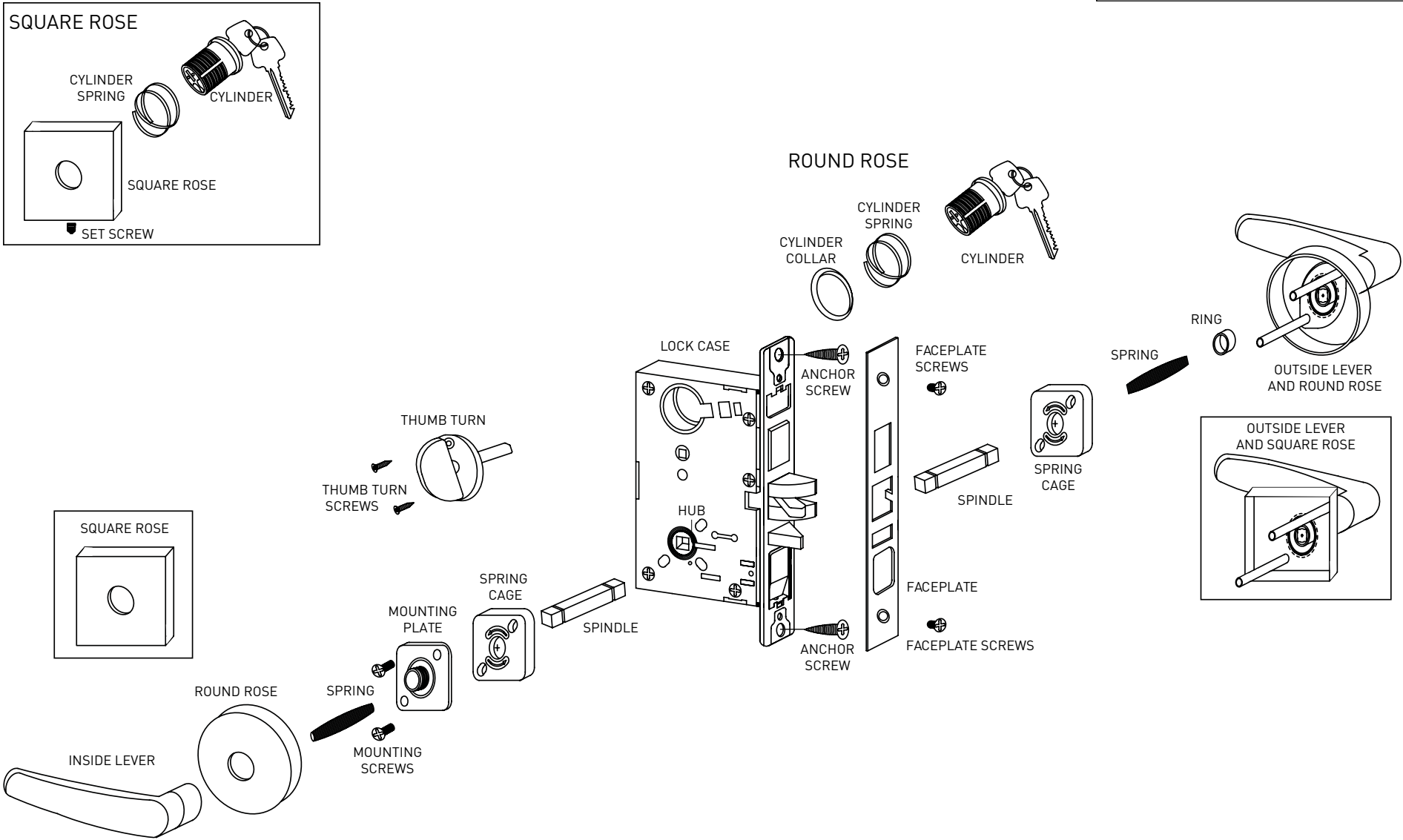
MORTISE LOCK  
INSTALLATION INSTRUCTIONS

EXPLODED DRAWING FOR LEVER TRIM WITH ESCUTCHEON PLATE

**NOTE** For proper installation, door must be professionally prepared using the install template provided. Suitable for 1-3/4" doors only.



EXPLODED DRAWING FOR LEVER WITH ROSE TRIM





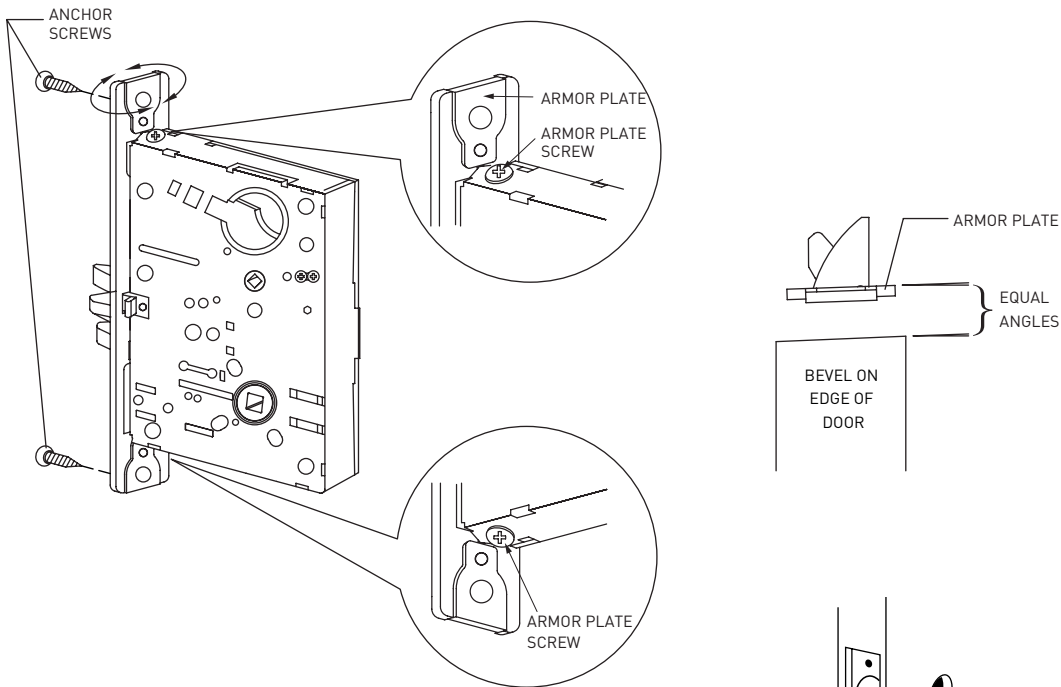
# MORTISE LOCK

## INSTALLATION INSTRUCTIONS

### Step 1A

#### Adjust Armor Plate for Bevel Door

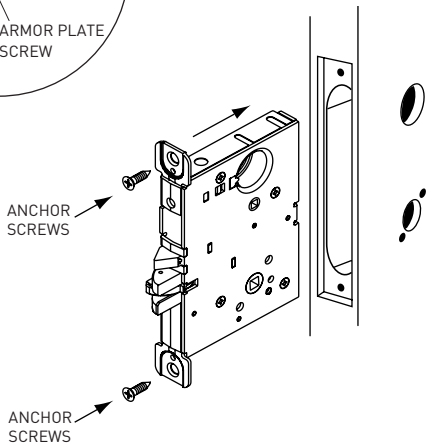
- 1) Loosen top and bottom armor plate screws (machine screws).
- 2) Adjust armor plate to match door bevel.
- 3) Re-tighten top and bottom armor plate screws hand tight.



### Step 1B

#### Install Lock Case

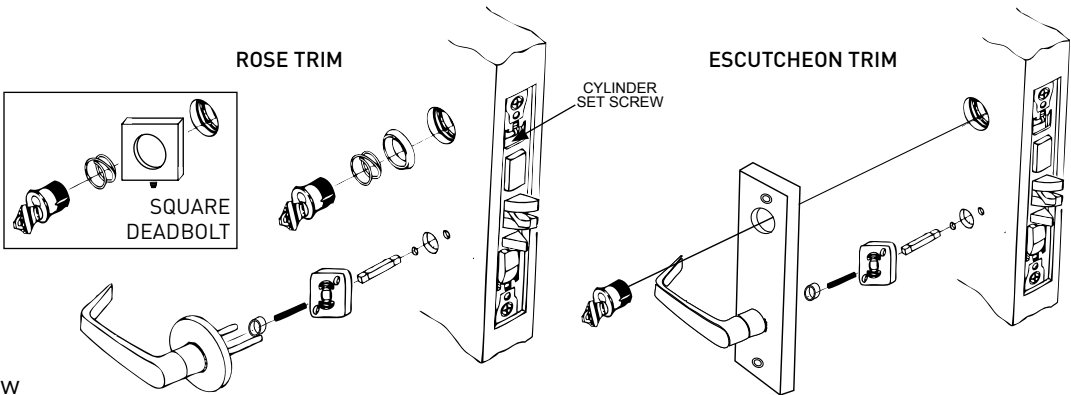
- 1) Leave the anchor (combination) screws slightly loose to allow for adjustment.
- 2) Ensure the correct handing of the spring latch.
- 3) Refer to “How to Change Handing” instructions at the end of the instruction sheet if necessary.



### Step 2

#### Install Outside Lever Trim (Escutcheon or Rose Trim)

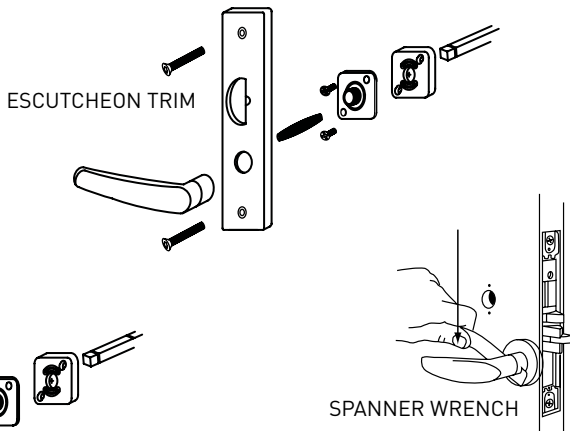
- 1) Insert spring into lever.
- 2) Install the ring.
- 3) Insert spindle into hub of lock case.
- 4) Place spring cage onto outside lever assembly with arrows pointing in direction of lever rotation.
- 5) Position outside lever assembly into post holes of lock case spring cage.
- 6) Ensure lever is in horizontal position.
- 7) For Rose trim, assemble cylinder, cylinder spring, cylinder collar or square rose and then thread into the lock case.
- 8) For Escutcheon trim thread cylinder into the lock case.
- 9) Securely tighten cylinder set screw (recessed Philips head screw near top of armor plate), making sure the set screw resides within the groove of the cylinder.



### Step 3

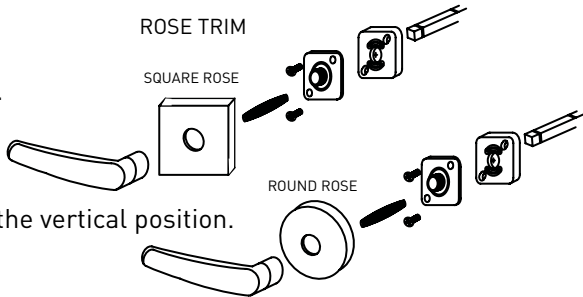
#### Install Inside Lever Trim with Escutcheon Plate

- 1) Make sure the arrows on the spring cage point in the direction of lever rotation.
- 2) Slide mounting plate and spring cage over the inside spindle and fasten with two (2) mounting screws.
- 3) Insert spindle into hub of lock case.
- 4) For escutcheon with thumb turn, retract deadbolt and install thumb turn in the vertical position.
- 5) Place escutcheon over mounting plate.
- 6) Install two (2) escutcheon mounting screws.
- 7) Ensure lever is in horizontal position.
- 8) Insert inside spring into lever and tighten inside lever bushing with spanner wrench.
- 9) Test operations of all functions before closing door.



#### Install Inside Lever Trim with Rose Trim

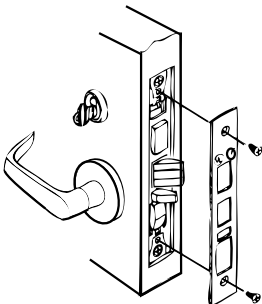
- 1) Make sure the arrows on the spring cage point in the direction of lever rotation.
- 2) Slide mounting plate and spring cage over the inside spindle and fasten with two (2) mounting screws.
- 3) Insert spindle into hub of lock case.
- 4) For rose with thumb turn, retract deadbolt and install thumb turn assembly in the vertical position. Fasten with two (2) thumb turn screws.
- 5) Cap inside rose over spring mount assembly.
- 6) Ensure lever is in horizontal position.
- 7) Insert inside spring into lever and tighten inside lever bushing.
- 8) Test operations of all functions before closing door.



### Step 4

#### Install Faceplate

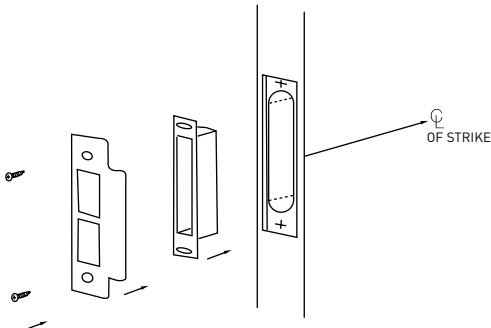
- 1) Tighten the anchor (combination) screws until hand tight.
- 2) Place faceplate in position and install the two (2) faceplate screws (machine screws).



### Step 5

#### Install Strike Plate

- 1) Fit strike plate and dust box into frame and secure into place with strike plate screws.



### How to Change Handing

#### If it is necessary to change handing, please follow steps below:

- 1) Use allen key to fully unfasten the screw in the hole behind latchbolt (green label).
- 2) Pull latchbolt out of the lock case.
- 3) Rotate latchbolt to adjust handing.
- 4) Fasten the screw tightly into the hole and secure with thread locker (Loctite 242).
- 5) Use flat head screwdriver to push the locking piece (green label) towards the opposite side of the lock case until it reaches the stop position.
- 6) Handing is completely reversed.

